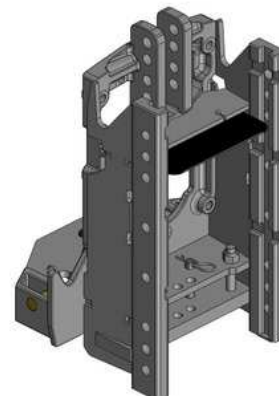


Claas Ares 500-600

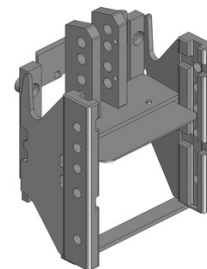
**Konzola standardní s přípravou
na tažnou tyč nebo spodní plato, W335**

Cena: 1 676,- EUR 00.218.03.2



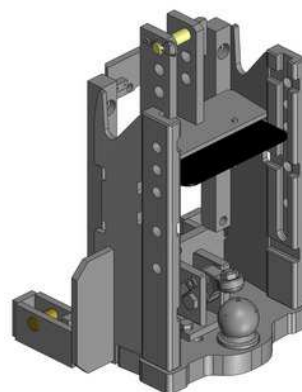
Konzola krátká, kompatibilní s hákem, W335

Cena: 668,- EUR 00.218.10.1



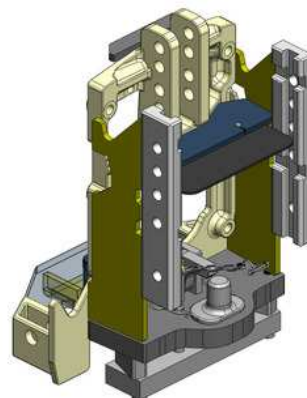
Konzola s koulí K-80, svislé zatížení 4 t, W335

Cena: 1 992,- EUR 00.218.81.0



**Konzola s pitonfixem a s přípravou
na tažnou tyč nebo spodní plato, W335**

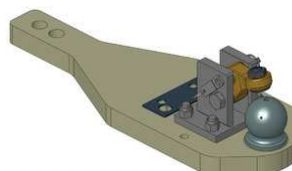
Cena: 2 252,- EUR 00.218.71.0



Claas Ares 500-600

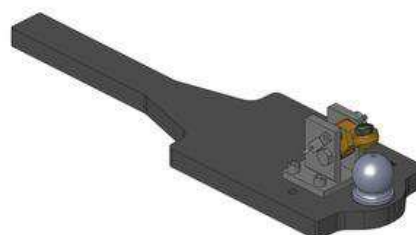
**Spodní plato s koulí K-80 do originál konzoly,
ale bez zavařeného pitonfixu**

Cena: 1 304,- EUR 00.960.640.0



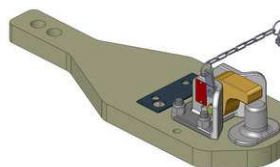
Spodní plato s koulí K-80, upravit

Cena: 818,- EUR 00.960.011.0



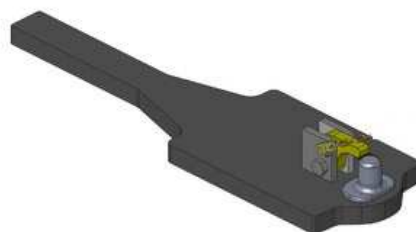
Spodní plato s pitonfixem

Cena: 1 201,- EUR 00.961.640.0



Spodní plato s pitonfixem, upravit

Cena: 792,- EUR 00.961.041.0

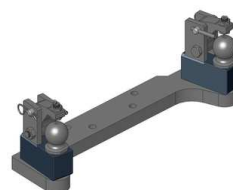


Oboustranné nucené řízení s K-50 pro spodní plato s K-80

Cena: 787,- EUR 00.521.0320.0

Nucené řízení jen pravé nebo levé

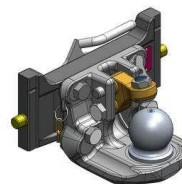
Cena: 489,- EUR



Claas Ares 500-600

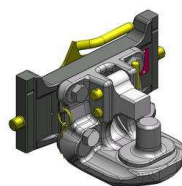
Koule K-80 do konzoly, dvoudílná

Cena: **920,- EUR** 07.6335.42



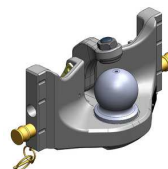
Pitonfix do konzoly, dvoudílný

Cena: **730,- EUR** 07.6335.32



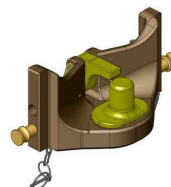
Koule K-80 do konzoly, jednodílná, neautomatické zajištění, svislé zatížení 4 t

Cena: **740,- EUR** 05.6335.51



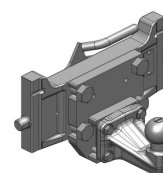
Pitonfix do konzoly, jednodílný, neautomatické zajištění

Cena: **580,- EUR** 05.6335.16



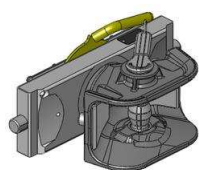
Koule K-50 do konzoly

Cena: **640,- EUR** 07.7335.03



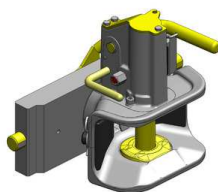
Hubice mechanická s kolíkem ø 30 nebo 38 mm

Cena: **543,- EUR**
03.3355.06



Hubice automatická s kolíkem ø 30 mm

Cena: **780,- EUR**
03.3351.221



Hubice automatická s kolíkem ø 38 mm

Cena: **780,- EUR**
11.3353.221

