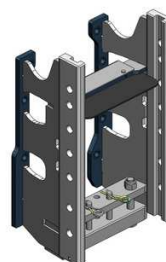


Claas Arion 410-460 (od v. č. A32/43, A52/53, A72/73)

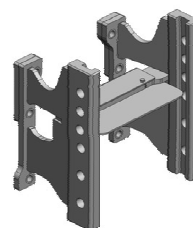
**Konzola standardní,
s přípravou na tažnou tyč nebo spodní plato, W335**

Cena: 981,- EUR 00.224.02.1



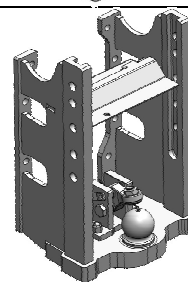
Konzola krátká, kompatibilní s hákem, W335

Cena: 668,- EUR 00.224.10.0



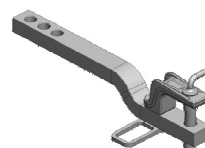
Konzola s koulí K-80, W330 (!!!)

Cena: 1 756,- EUR 00.224.80.0



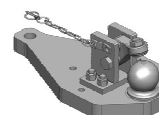
Tažná tyč

Cena: 296,- EUR 10.820.486.0



Spodní plato s koulí K-80

Cena: 1 180,- EUR 00.960.649.0



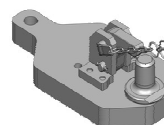
Spodní plato s K-80, pro originál konzolu s pitonfixem

Cena: 1 092,- EUR 00.960.648.0



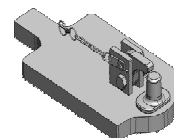
Spodní plato s pitonfixem

Cena: 759,- EUR 00.961.171.5



Spodní plato s pitonfixem, upravit

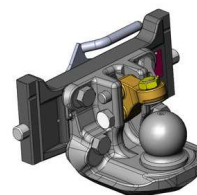
Cena: 464,- EUR 00.961.031.0



Claas Arion 410-460 (od v. č. A32/43, A52/53, A72/73)

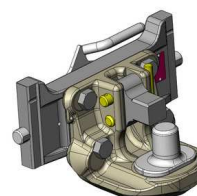
Koule K-80 pro konzolu, dvoudílná

Cena: **920,- EUR** 07.6330.42



Pitonfix pro konzolu, dvoudílný

Cena: **730,- EUR** 07.6330.32

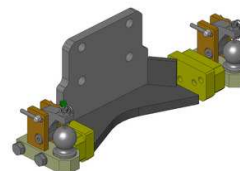


Oboustranné nucené řízení pro dvoudílnou K-80

Cena: **976,- EUR** 00.520.032.0

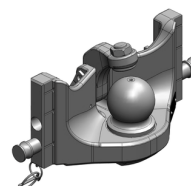
Nucené řízení jen pravé nebo levé

Cena: **725,- EUR**



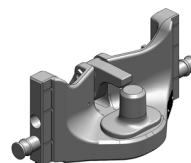
Koule K-80 pro konzolu, jednodílná, neautomatické zajištění, svislé zatížení 4t

Cena: **740,- EUR** 05.6330.51



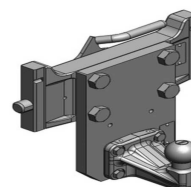
Pitonfix pro konzolu, jednodílný, neautomatické zajištění

Cena: **580,- EUR** 05.6330.16



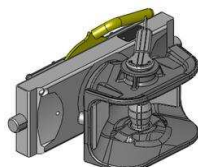
Koule K-50 pro konzolu

Cena: **640,- EUR** 07.7330.05



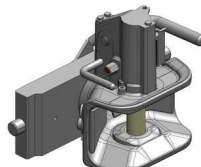
Hubice mechanická s kolíkem ø 30 nebo 38 mm

Cena: **543,- EUR**
03.3305.06



Hubice automatická s kolíkem ø 30 mm

Cena: **780,- EUR**
03.3301.021



Hubice automatická s kolíkem ø 38 mm

Cena: **780,- EUR**
03.3303.221

