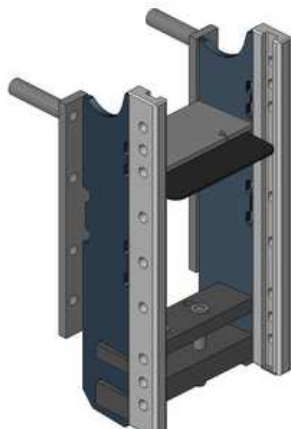


## Claas Atlas

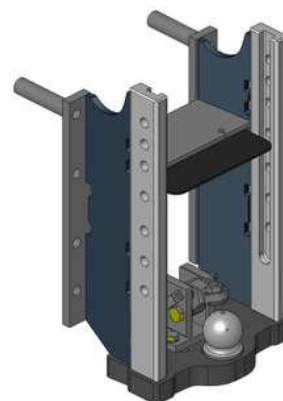
### Konzola standardní, W335

Cena: **981,- EUR** 00.222.00.0



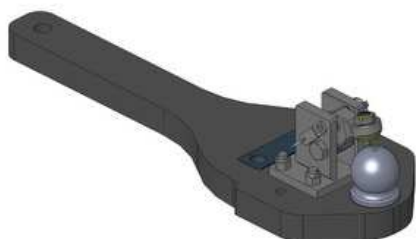
### Konzola s koulí K-80, W335

Cena: **1 824,- EUR** 00.222.80.0



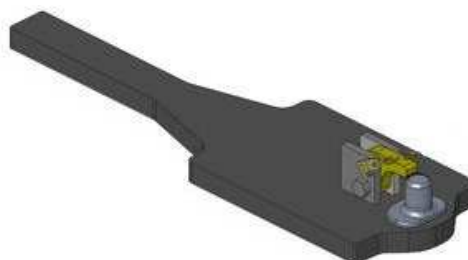
### Spodní plato s koulí K-80 pro originální konzolu

Cena: **1 306,- EUR** 00.960.460.3



### Spodní plato s pitonfixem pro originální konzolu, upravit

Cena: **848,- EUR** 00.961.046.0

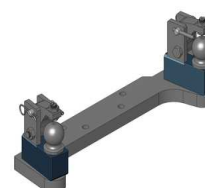


### Oboustranné nucené řízení s K-50 pro spodní plato s K-80

Cena: **787,- EUR** 00.521.0320.0

### Nucené řízení jen pravé nebo levé

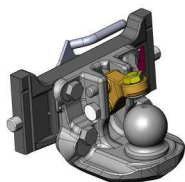
Cena: **489,- EUR**



## Claas Atlas

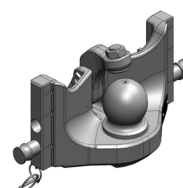
### Koule K-80 pro konzolu, dvoudílná

Cena: **920,- EUR** 07.6335.42



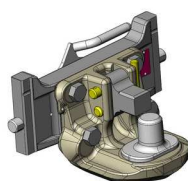
### Koule K-80 pro konzolu, jednodílná, neautomatické zajištění, svislé zatížení 4 t

Cena: **740,- EUR** 05.6335.51



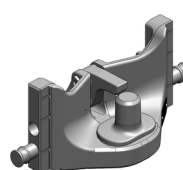
### Pitonfix pro konzolu, dvoudílný

Cena: **730,- EUR** 07.6335.32



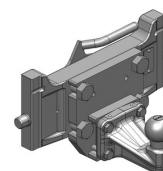
### Pitonfix pro konzolu, jednodílný, neautomatické zajištění

Cena: **580,- EUR** 05.6335.16



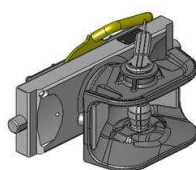
### Koule K-50 pro konzolu

Cena: **640,- EUR** 07.7335.03



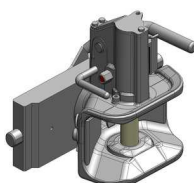
### Hubice mechanická s kolíkem ø 30 nebo 38 mm

Cena: **543,- EUR**  
03.3355.06



### Hubice automatická s kolíkem ø 30 mm

Cena: **780,- EUR**  
03.3351.221



### Hubice automatická s kolíkem ø 38 mm

Cena: **780,- EUR**  
11.3353.221

