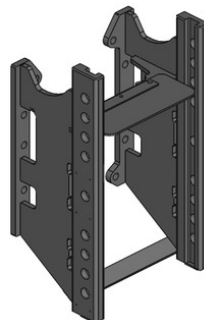


## John Deere Série 5020 + 5000R

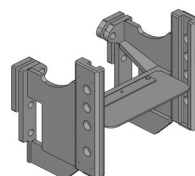
### Konzola standardní, W330

Cena: 668,- EUR 00.164.00.1



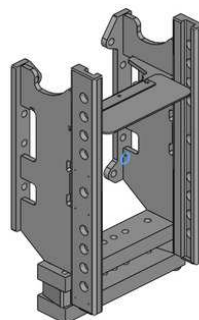
### Konzola kompatibilní s hákem, W330

Cena: 514,- EUR 00.164.10.0



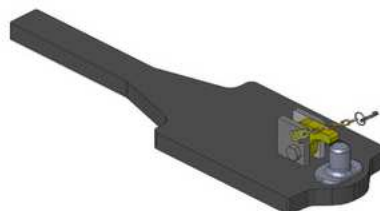
### Konzola s přípravou pro tažnou tyč, W330

Cena: 981,- EUR 00.164.50.1



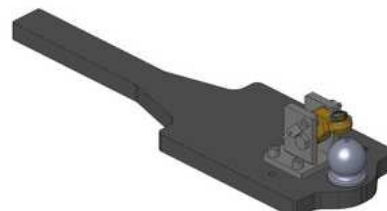
### Spodní plato s pitonfixem, upravit

Cena: 792,- EUR 00.961.041.0



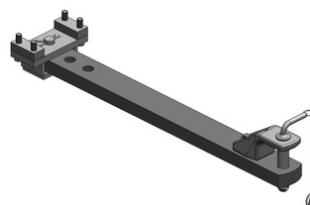
### Spodní plato s koulí K-80, upravit

Cena: 818,- EUR 00.960.011.0



### Tažná tyč (pro konzoly s přípravou)

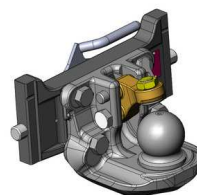
Proti poptávce



## John Deere Série 5020 + 5000R

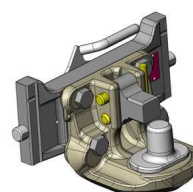
### Koule K-80 pro konzolu, dvoudílná

Cena: **920,- EUR** 07.6330.42-A17



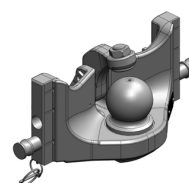
### Pitonfix pro konzolu, dvoudílný

Cena: **730,- EUR** 07.6330.32-A17



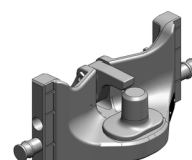
### Koule K-80 pro konzolu, jednodílná, neautomatické zajištění, svislé zatížení 4 t

Cena: **740,- EUR** 05.6330.51-A17



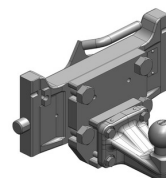
### Pitonfix pro konzolu, jednodílný, neautomatické zajištění

Cena: **580,- EUR** 05.6330.16-A17



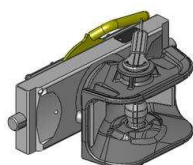
### Koule K-50 pro konzolu

Cena: **640,- EUR** 07.7330.04



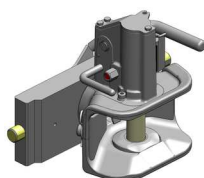
### Hubice mechanická s kolíkem ø 30 nebo 38 mm

Cena: **543,- EUR**  
03.3305.06-A17



### Hubice automatická s kolíkem ø 30 mm

Cena: **780,- EUR**  
03.3301.121-A17



### Hubice automatická s kolíkem ø 38 mm

Cena: **780,- EUR**  
03.3303.221-A17

