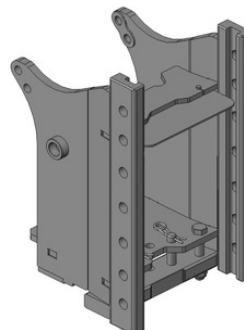


## Kubota M 100-110-126-135 GX/S

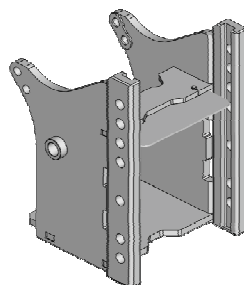
### Konzola s přípravou na tažnou tyč

**Cena: 991,- EUR** 00.258.05.0



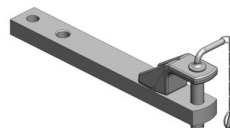
### Konzola krátká

**Cena: 748,- EUR** 00.258.12.0



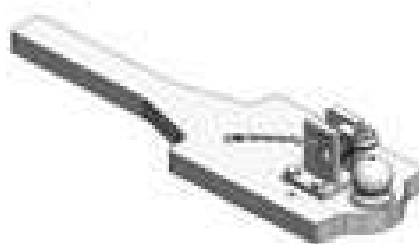
### Tažná tyč

**Cena: 296,- EUR** 10.820.740.1



### Spodní plato s K-80 (upravit)

**Cena: 818,- EUR** 00.960.011.0



### Spodní plato s pitonfixem, upravit

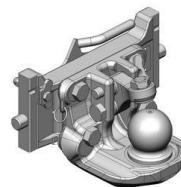
**Cena: 464,- EUR** 00.961.031.0



## Kubota M 100-110-126-135 GX/S

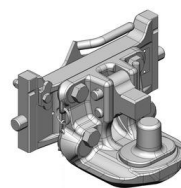
### Koule K-80 pro konzolu, dvoudílná

Cena: **920,- EUR** 07.6330.42



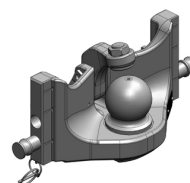
### Pitonfix pro konzolu, dvoudílný

Cena: **730,- EUR** 07.6330.32



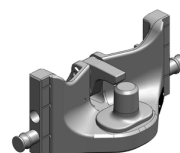
### Koule K-80 pro konzolu, jednodílná, neautomatické zajištění, svislé zatížení 4 t

Cena: **740,- EUR** 05.6330.51



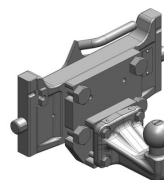
### Pitonfix pro konzolu, jednodílný, neautomatické zajištění

Cena: **580,- EUR** 05.6330.16



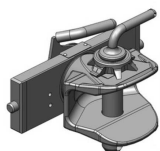
### Koule K-50 pro konzolu

Cena: **640,- EUR** 07.7330.04



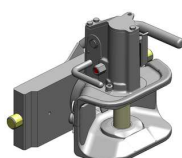
### Hubice mechanická s kolíkem ø 30 nebo 38 mm

Cena: **740,- EUR**  
03.3304.940



### Hubice automatická s kolíkem ø 30

Cena: **780,- EUR**  
03.3301.221



### Hubice automatická s kolíkem ø 38 mm

Cena: **780,- EUR**  
03.3303.221

