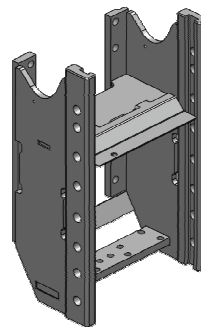


Kubota M 6.121-6.142

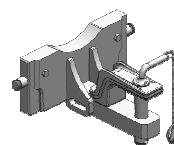
Konzola standardní, W330

Cena: **826,- EUR** 00.258.30.0



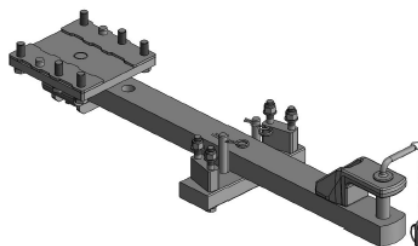
Tažná tyč do konzoly krátká, zatížení 1600 kg

Cena: **653,- EUR** 00.833.00.0



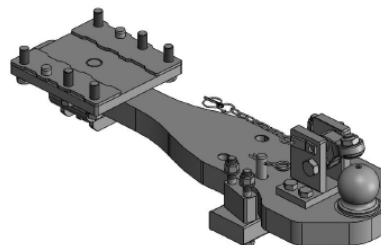
Tažná tyč, sada vč. držáků

Cena: **650,- EUR** 00.807.07.0



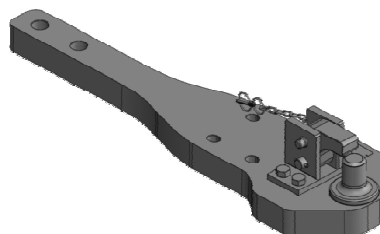
Spodní plato s K-80, vč. držáků

Cena: **1 743,- EUR** 00.960.604.0-SET



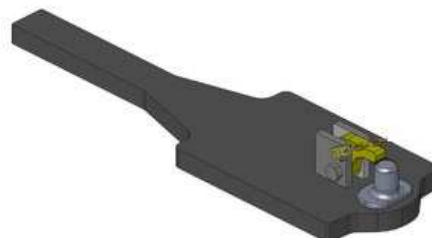
Spodní plato s pitonfixem

Cena: **1 301,- EUR** 00.961.604.0



Spodní plato s pitonfixem, upravit

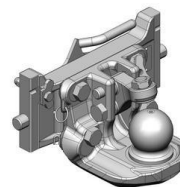
Cena: **848,- EUR** 00.961.046.0



Kubota M 6.121-6.142

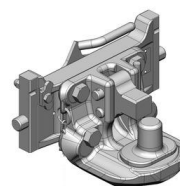
Koule K-80 pro konzolu, dvoudílná

Cena: **920,- EUR** 07.6330.42



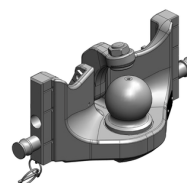
Pitonfix pro konzolu, dvoudílný

Cena: **730,- EUR** 07.6330.32



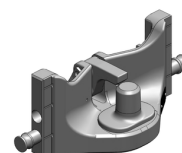
Koule K-80 pro konzolu, jednodílná, neautomatické zajištění, svislé zatížení 4 t

Cena: **740,- EUR** 05.6330.51



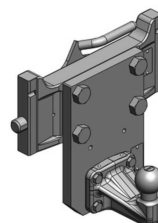
Pitonfix pro konzolu, jednodílný, neautomatické zajištění

Cena: **580,- EUR** 05.6330.16



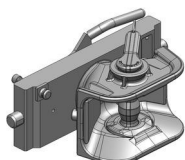
Koule K-50 pro konzolu

Cena: **640,- EUR** 07.7330.05



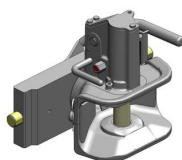
Hubice mechanická s kolíkem ø 30 nebo 38 mm

Cena: **543,- EUR**
03.3305.06



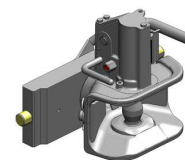
Hubice automatická s kolíkem ø 30

Cena: **780,- EUR**
03.3301.221



Hubice automatická s kolíkem ø 38 mm

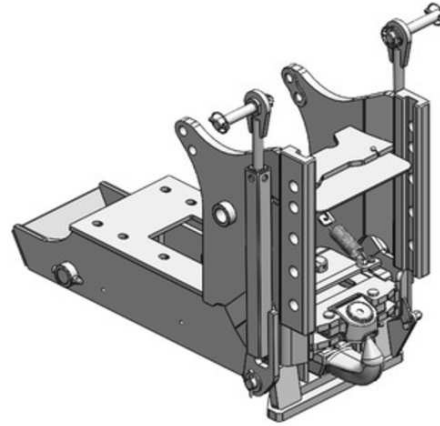
Cena: **780,- EUR**
03.3303.221



Kubota M 6.121-6.142

Hák hydraulický vč. tažné tyče

Cena: 4 702,- EUR 00.400.54.0



Vložka K-80 do háku

Cena: 779,- EUR 00.427.11.0

