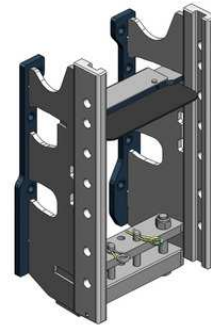


## MF 4707-4709

**Konzola standardní,  
s přípravou na tažnou tyč nebo spodní plato, W335**

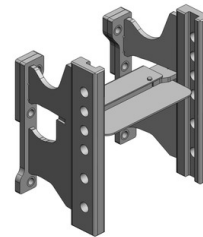
**Cena: 981,- EUR 00.224.01.0**



---

**Konzola krátká, kompatibilní s hákem, W335**

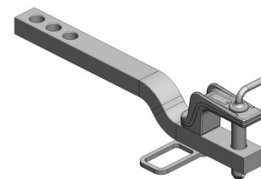
**Cena: 668,- EUR 00.224.10.0**



---

**Tažná tyč**

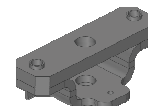
**Cena: 296,- EUR 10.820.486.0**



---

**Držák tažné tyče**

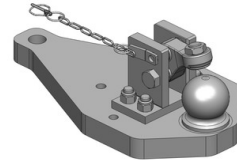
**Cena: 180,- EUR 10.823.720.0**



## MF 4707-4709

### Spodní plato s koulí K-80 pro Scharmüller konzolu

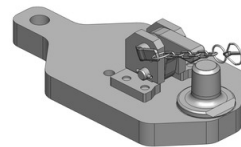
**Cena:** 1 339,- EUR 00.960.649.0



---

### Spodní plato s pitonfixem pro Scharmüller konzolu

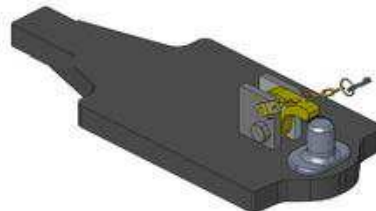
**Cena:** 949,- EUR 00.961.171.5



---

### Spodní plato s pitonfixem pro Scharmüller konzolu, upravit

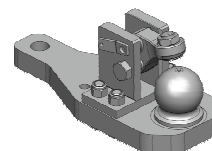
**Cena:** 464,- EUR 00.961.031.0



---

### Spodní plato s koulí K-80 pro originální konzolu

**Cena:** 811,- EUR 00.960.646.0



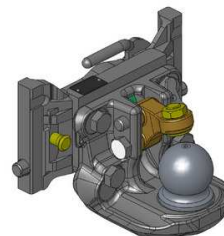
## MF 4707-4709

### Koule K-80, dvoudílná

pro konzolu

originální: 920,- EUR 05.6311.420

Scharmüller: 920,- EUR 07.6335.42



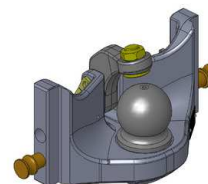
---

### Koule K-80, jednodílná, neautomatické zajištění, svislé zatížení 4 t

pro konzolu

originální: 840,- EUR 05.6311.51

Scharmüller: 740,- EUR 05.6335.51



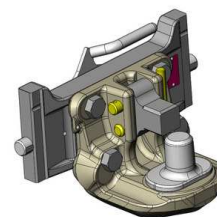
---

### Pitonfix, dvoudílný

pro konzolu

originální: 964,- EUR 05.7311.420 + 00.671.04.0

Scharmüller: 730,- EUR 07.6335.32



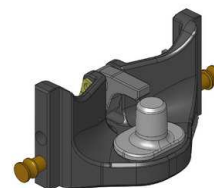
---

### Pitonfix, jednodílný, neautomatické zajištění

pro konzolu

originální: 580,- EUR 05.6311.16

Scharmüller: 580,- EUR 05.6335.16



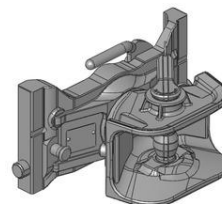
## MF 4707-4709

### Hubice mechanická s kolíkem $\varnothing$ 30 nebo 38 mm

pro konzolu

originální: 543,- EUR 05.3115.06

Scharmüller: 543,- EUR 03.3355.06



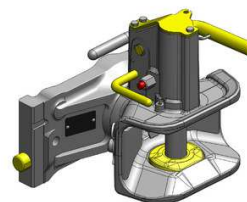
---

### Hubice automatická s kolíkem $\varnothing$ 30 mm

pro konzolu

originální: 840,- EUR 05.3111.221

Scharmüller: 780,- EUR 03.3351.221



---

### Hubice automatická s kolíkem $\varnothing$ 38 mm

pro konzolu

originální: 840,- EUR 05.3113.221

Scharmüller: 780,- EUR 11.3353.221

