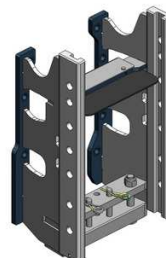


MF 5709M-5713M
MF 5S.105-145

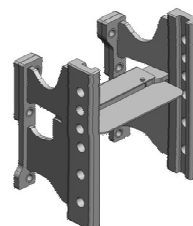
**Konzola standardní,
s přípravou na tažnou tyč nebo spodní plato, W335**

Cena: 981,- EUR 00.224.02.1



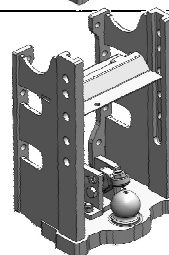
Konzola krátká, kompatibilní s hákem, W335

Cena: 668,- EUR 00.224.10.0



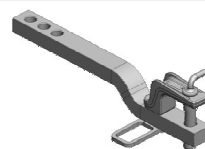
Konzola s koulí K-80, W330 (!!!)

Cena: 1 756,- EUR 00.224.80.0



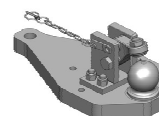
Tažná tyč

Cena: 296,- EUR 10.820.486.0



Spodní plato s koulí K-80

Cena: 1 180,- EUR 00.960.649.0



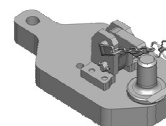
Spodní plato s K-80, pro originál konzolu s pitonfixem

Cena: 1 092,- EUR 00.960.648.0



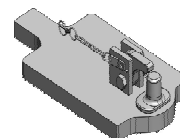
Spodní plato s pitonfixem

Cena: 759,- EUR 00.961.171.5



Spodní plato s pitonfixem, upravit

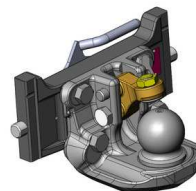
Cena: 464,- EUR 00.961.031.0



MF 5709M-5713M
MF 5S.105-145

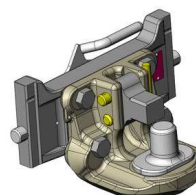
Koule K-80 pro konzolu, dvoudílná

Cena: 920,- EUR 07.6330.42



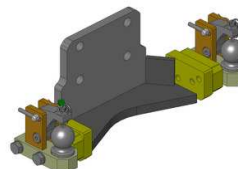
Pitonfix pro konzolu, dvoudílný

Cena: 730,- EUR 07.6330.32



Oboustranné nucené řízení pro dvoudílnou K-80

Cena: 976,- EUR 00.520.032.0

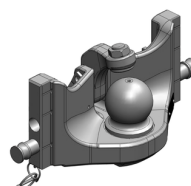


Nucené řízení jen pravé nebo levé

Cena: 725,- EUR

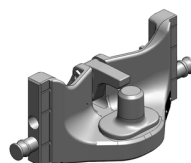
**Koule K-80 pro konzolu, jednodílná,
neautomatické zajištění, svislé zatížení 4t**

Cena: 740,- EUR 05.6330.51



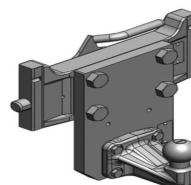
**Pitonfix pro konzolu, jednodílný,
neautomatické zajištění**

Cena: 580,- EUR 05.6330.16



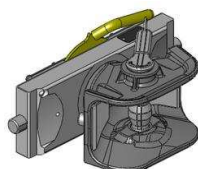
Koule K-50 pro konzolu

Cena: 640,- EUR 07.7330.05



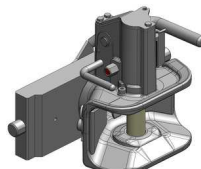
**Hubice mechanická
s kolíkem ø 30 nebo 38 mm**

Cena: 543,- EUR
03.3305.06



**Hubice automatická
s kolíkem ø 30 mm**

Cena: 780,- EUR
03.3301.021



**Hubice automatická
s kolíkem ø 38 mm**

Cena: 780,- EUR
03.3303.221

