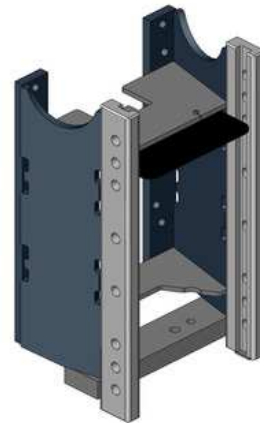


MF 6485-6495 Tier 2

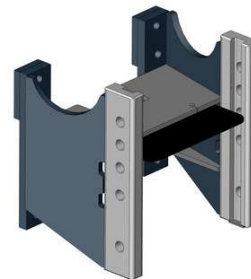
**Konzola standardní,
s přípravou na tažnou tyč nebo spodní plato, W335**

Cena: 826,- EUR 00.217.01.0



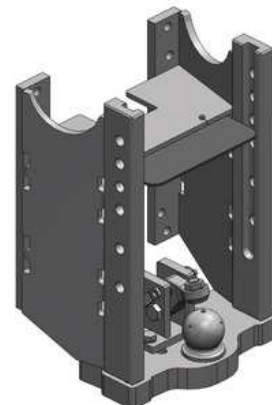
Konzola krátká, kompatibilní s hákem, W335

Cena: 668,- EUR 00.217.11.0



Konzola s koulí K-80, W335

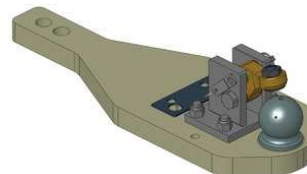
Cena: 1 824,- EUR 00.217.82.0



MF 6485-6495 Tier 2

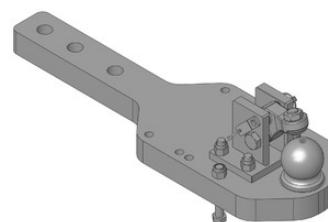
Spodní plato s koulí K-80 pro originální konzolu

Cena: 1 304,- EUR 00.960.640.0



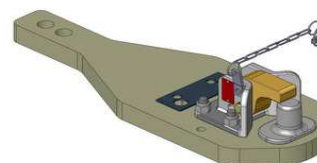
Spodní plato s koulí K-80 pro Scharmüller konzolu

Cena: 1 442,- EUR 00.960.642.0



Spodní plato s pitonfixem pro originální konzolu

Cena: 1 201,- EUR 00.961.640.0



Spodní plato s pitonfixem pro originální konzolu, upravit

Cena: 792,- EUR 00.961.041.0

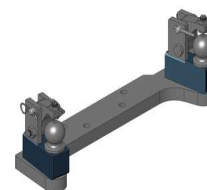


Oboustranné nucené řízení s K-50 pro spodní plato s K-80

Cena: 787,- EUR 00.521.0320.0

Nucené řízení jen pravé nebo levé

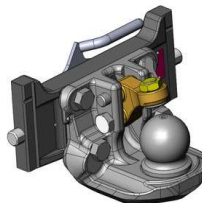
Cena: 489,- EUR



MF 6485-6495 Tier 2

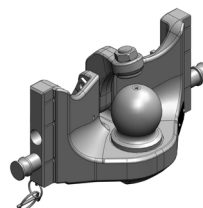
Koule K-80 pro konzolu, dvoudílná

Cena: **920,- EUR** 07.6335.42



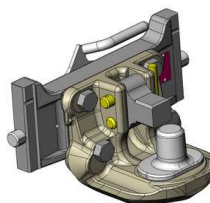
Koule K-80 pro konzolu, jednodílná, neautomatické zajištění, svislé zatížení 4 t

Cena: **740,- EUR** 05.6335.51



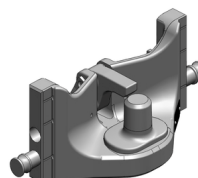
Pitonfix pro konzolu, dvoudílný

Cena: **730,- EUR** 07.6335.32



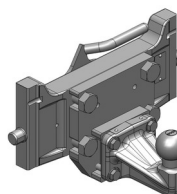
Pitonfix pro konzolu, jednodílný, neautomatické zajištění

Cena: **580,- EUR** 05.6335.16



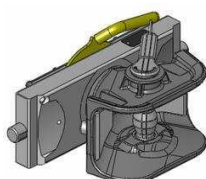
Koule K-50 pro konzolu

Cena: **640,- EUR** 07.7335.03



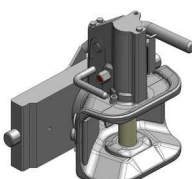
Hubice mechanická s kolíkem ø 30 nebo 38 mm

Cena: **543,- EUR**
03.3355.06



Hubice automatická s kolíkem ø 30 mm

Cena: **780,- EUR**
03.3351.221



Hubice automatická s kolíkem ø 38 mm

Cena: **780,- EUR**
11.3353.221

