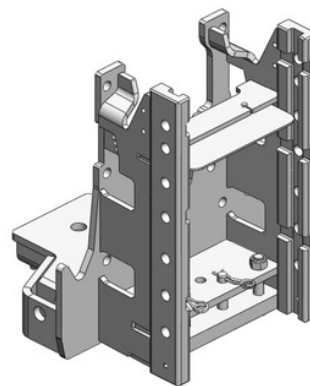


**MF 6612-6615 Dyna-4, MF 6712-6715 Dyna-4  
MF 7614-7615 Dyna-4, MF 7714-7715 Dyna-4**

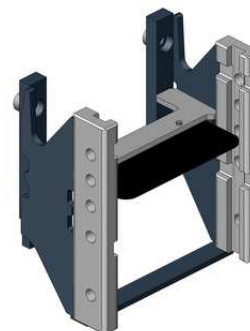
**Konzola standardní,  
s přípravou na tažnou tyč nebo spodní plato, W335**

**Cena: 1 060,- EUR** 00.218.05.2



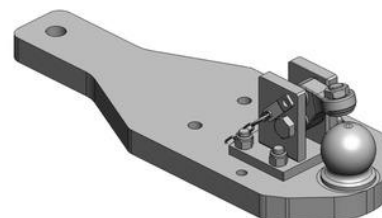
**Konzola krátká, kompatibilní s hákem, W335**

**Cena: 668,- EUR** 00.218.15.0



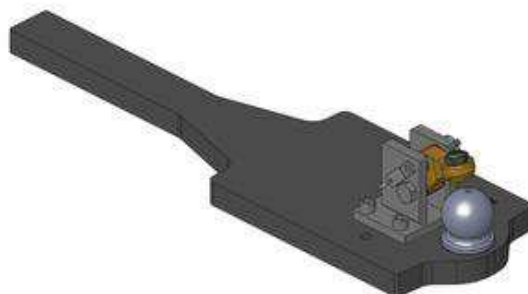
**Spodní plato s koulí K-80**

**Cena: 1 274,- EUR** 00.960.647.0



**Spodní plato s koulí K-80, upravit**

**Cena: 818,- EUR** 00.960.011.0

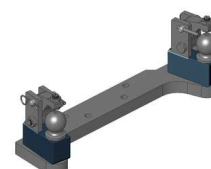


**Oboustranné nucené řízení s K-50 pro spodní plato s K-80**

**Cena: 787,- EUR** 00.521.0325.0

**Nucené řízení jen pravé nebo levé**

**Cena: 489,- EUR**



**MF 6612-6615 Dyna-4, MF 6712-6715 Dyna-4  
MF 7614-7615 Dyna-4, MF 7714-7715 Dyna-4**

**Tažná tyč**

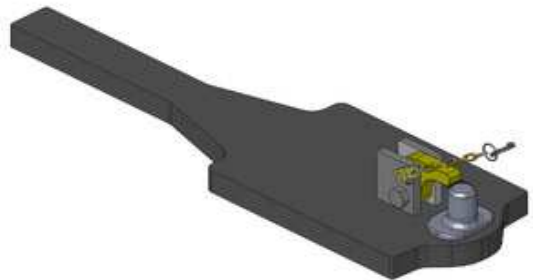
**Cena: 296,- EUR** 10.820.825.0



---

**Spodní plato s pitonfixem, upravit**

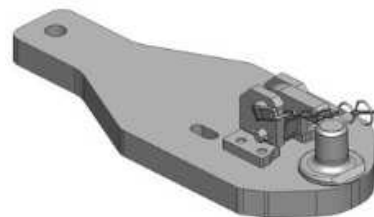
**Cena: 792,- EUR** 00.961.041.0



---

**Spodní plato s pitonfixem**

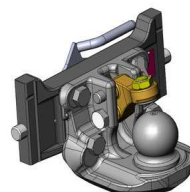
**Cena: 1 019,- EUR** 00.961.645.0



## MF 6612-6615 Dyna-4, MF 6712-6715 Dyna-4 MF 7614-7615 Dyna-4, MF 7714-7715 Dyna-4

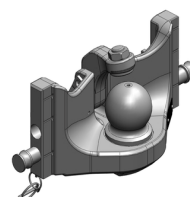
### Koule K-80 pro konzolu, dvoudílná

**Cena: 920,- EUR** 07.6335.42



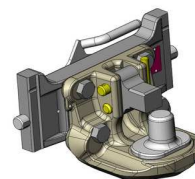
### Koule K-80 pro konzolu, jednodílná, neautomatické zajištění, svislé zatížení 4 t

**Cena: 740,- EUR** 05.6335.51



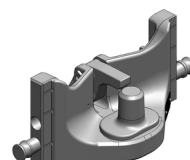
### Pitonfix pro konzolu, dvoudílný

**Cena: 730,- EUR** 07.6335.32



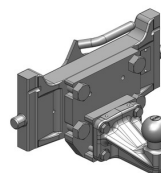
### Pitonfix pro konzolu, jednodílný, neautomatické zajištění

**Cena: 580,- EUR** 05.6335.16



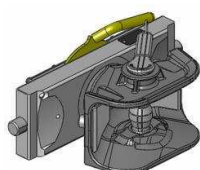
### Koule K-50 pro konzolu

**Cena: 640,- EUR** 07.7335.03



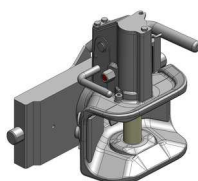
### Hubice mechanická s kolíkem ø 30 nebo 38 mm

**Cena: 543,- EUR**  
03.3355.06



### Hubice automatická s kolíkem ø 30 mm

**Cena: 780,- EUR**  
03.3351.221



### Hubice automatická s kolíkem ø 38 mm

**Cena: 780,- EUR**  
11.3353.221

