

New Holland Fiat G 170-240, Ford 8670-8970, Landini Starland

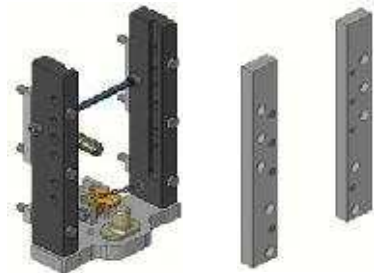
Konzola standardní vč. mezikusů, 9 poloh

Cena: 1 389,- EUR



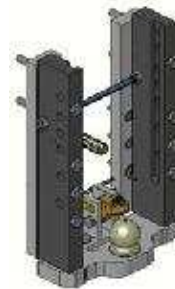
Konzola s pitonfixem vč. mezikusů

Cena: 1 852,- EUR



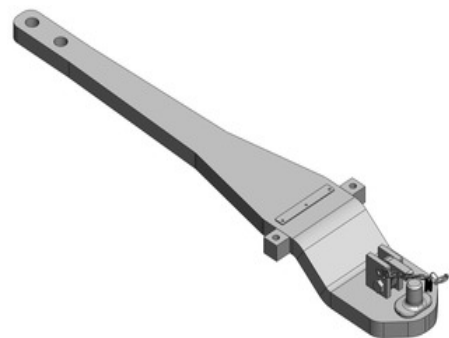
Konzola s koulí K-80 vč. mezikusů

Cena: 1 824,- EUR 00.158.85.1



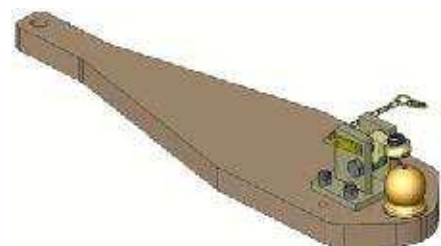
Spodní plato s pitonfixem, upravit

Cena: 932,- EUR 00.961.406.1



Spodní plato s koulí K-80, do konzoly originál NH

Cena: 1 342,- EUR 00.960.580.1

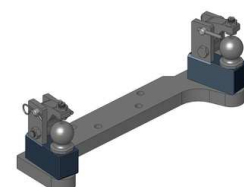


Oboustranné nucené řízení s K-50 pro spodní plato s K-80

Cena: 787,- EUR 00.521.0320.0

Nucené řízení jen pravé nebo levé

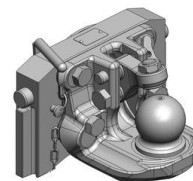
Cena: 489,- EUR



New Holland Fiat G 170-240, Ford 8670-8970, Landini Starland

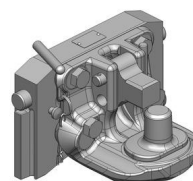
Koule K-80 do konzoly originál NH

Cena: **990,- EUR** 03.6320.46



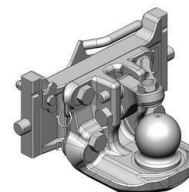
Pitonfix do konzoly originál NH

Cena: **800,- EUR** 03.6320.25



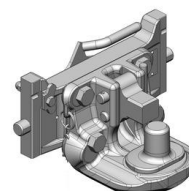
Koule K-80 do konzoly Scharmüller

Cena: **920,- EUR** 07.6330.42



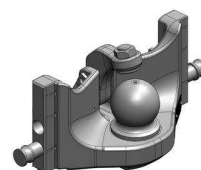
Pitonfix do konzoly Scharmüller

Cena: **730,- EUR** 07.6330.32



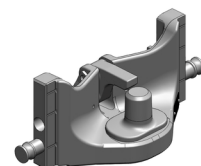
Koule K-80 do konzoly Scharmüller, neautomatické zajištění, svislé zatížení 4 t

Cena: **740,- EUR** 05.6330.51



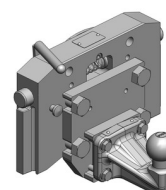
Pitonfix do konzoly Scharmüller, neautomatické zajištění

Cena: **580,- EUR** 05.6330.16



Koule K-50

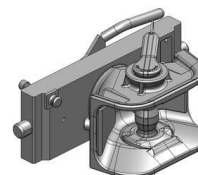
Cena: **640,- EUR** 07.7330.02
03.7320.04



New Holland Fiat G 170-240, Ford 8670-8970, Landini Starland

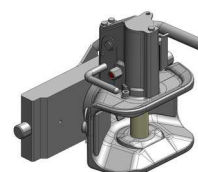
**Hubice mechanická s kolíkem ø 30 nebo 38 mm
do konzoly**

Scharmüller	543,- EUR	03.3305.06
originál NH	543,- EUR	03.3205.06



**Hubice automatická s kolíkem ø 30 mm
do konzoly**

Scharmüller	780,- EUR	03.3301.021
originál NH	880,- EUR	03.6320.431



**Automatická hubice s kolíkem ø 38 mm
do konzoly**

Scharmüller	780,- EUR	03.3303.221
originál NH	880,- EUR	03.6320.531

