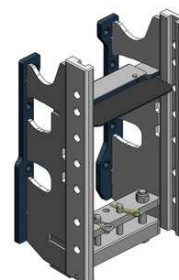


Valtra G 105-135

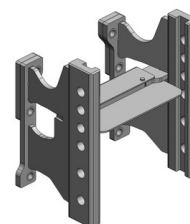
**Konzola standardní,
s přípravou na tažnou tyč nebo spodní plato, W335**

Cena: 981,- EUR 00.224.02.1



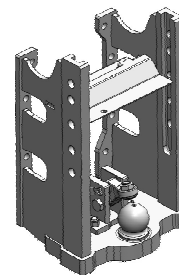
Konzola krátká, kompatibilní s hákem, W335

Cena: 668,- EUR 00.224.10.0



Konzola s koulí K-80, W335

Cena: 1 756,- EUR 00.224.80.0

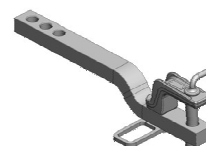


Některé traktory mají konzolu v rozměru W330/32/25.

Níže uvedené závěsy nebudou pasovat, pro vybrání správného závěsu nás kontaktujte.

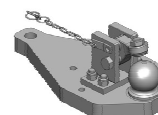
Tažná tyč

Cena: 296,- EUR 10.820.486.0



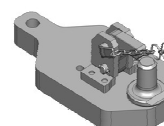
Spodní plato s koulí K-80

Cena: 1 339,- EUR 00.960.649.0



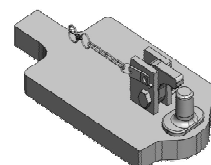
Spodní plato s pitonfixem

Cena: 949,- EUR 00.961.171.5



Spodní plato s pitonfixem, upravit

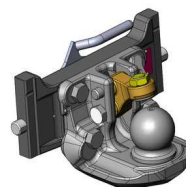
Cena: 464,- EUR 00.961.031.0



Valtra G 105-135

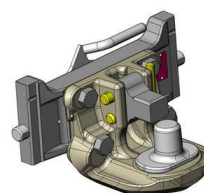
Koule K-80 pro konzolu, dvoudílná

Cena: 920,- EUR 07.6335.42



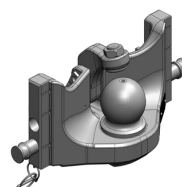
Pitonfix pro konzolu, dvoudílný

Cena: 730,- EUR 07.6335.32



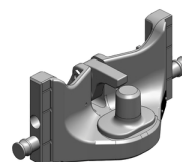
Koule K-80 pro konzolu, jednodílná, neautomatické zajištění, svislé zatížení 4 t

Cena: 740,- EUR 05.6335.51



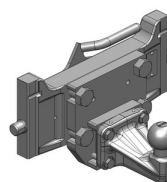
Pitonfix pro konzolu, jednodílný, neautomatické zajištění

Cena: 580,- EUR 05.6335.16



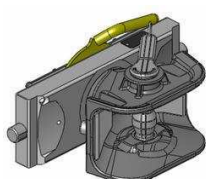
Koule K-50 pro konzolu

Cena: 640,- EUR 07.7335.03



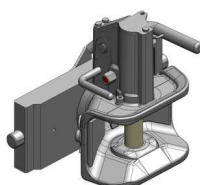
Hubice mechanická s kolíkem ø 30 nebo 38 mm

Cena: 543,- EUR
03.3355.06



Hubice automatická s kolíkem ø 30 mm

Cena: 780,- EUR
03.3351.221



Hubice automatická s kolíkem ø 38 mm

Cena: 780,- EUR
11.3353.221

