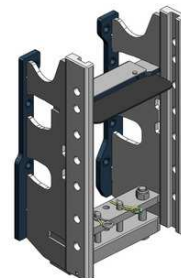


## Valtra G 105-135

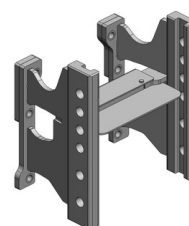
**Konzola standardní,  
s přípravou na tažnou tyč nebo spodní plato, W335**

**Cena: 981,- EUR** 00.224.02.1



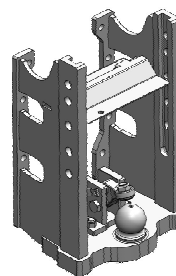
**Konzola krátká, kompatibilní s hákem, W335**

**Cena: 668,- EUR** 00.224.10.0



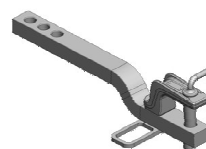
**Konzola s koulí K-80, W335**

**Cena: 1 756,- EUR** 00.224.80.0



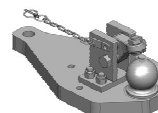
**Tažná tyč**

**Cena: 296,- EUR** 10.820.486.0



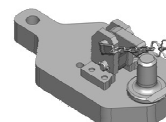
**Spodní plato s koulí K-80**

**Cena: 1 339,- EUR** 00.960.649.0



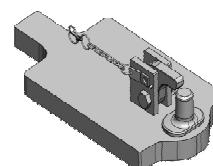
**Spodní plato s pitonfixem**

**Cena: 949,- EUR** 00.961.171.5



**Spodní plato s pitonfixem, upravit**

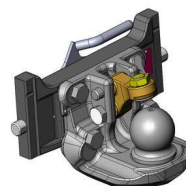
**Cena: 464,- EUR** 00.961.031.0



## Valtra G 105-135

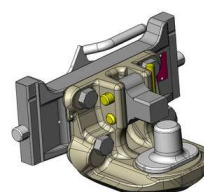
### Koule K-80 pro konzolu, dvoudílná

Cena: **920,- EUR**      **W335** 07.6335.42  
**W330** 07.6330.42



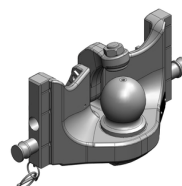
### Pitonfix pro konzolu, dvoudílný

Cena: **730,- EUR**      **W335** 07.6335.32  
**W330** 07.6330.32



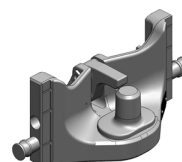
### Koule K-80 pro konzolu, jednodílná, neautomatické zajištění, svislé zatížení 4 t

Cena: **740,- EUR**      **W335** 05.6335.51  
**W330** 05.6330.51



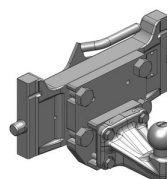
### Pitonfix pro konzolu, jednodílný, neautomatické zajištění

Cena: **580,- EUR**      **W335** 05.6335.16  
**W330** 05.6330.16



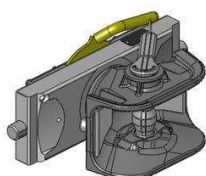
### Koule K-50 pro konzolu

Cena: **640,- EUR**      **W335** 07.7335.03  
**W330** 07.7330.04



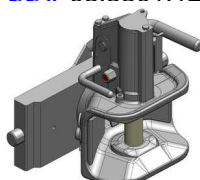
### Hubice mechanická s kolíkem ø 30 nebo 38 mm

Cena: **543,- EUR**  
**W335** 03.3355.06  
**W330** 03.3305.06



### Hubice automatická s kolíkem ø 30 mm

Cena: **780,- EUR**  
**W335** 03.3351.221  
**W330** 03.3301.121



### Hubice automatická s kolíkem ø 38 mm

Cena: **780,- EUR**  
**W335** 11.3353.221  
**W330** 03.3303.221

